

MESMERIZING WILLIAM CHRISTMAS
KNIGHTON DESIGN
A 1902 CUTTING EDGE "MODERN ENGLISH"



1806 NW 32nd Avenue

This is a timeless, eye-catching residence with recent updates, natural woodwork, coffered ceilings & multi-paned windows. Stellar kitchen remodel sings entertainment. With a level yard and the recent addition of a deluxe 2-car detached garage that is heated and insulated. Above is an ADU for an additional 818 Sq. Ft. w/kitchen & bath. In coveted Willamette Heights neighborhood, bordered by lush Forest Park. 3 bedrooms, 3½ baths, den, 3,612 Sq. Ft. + 1,492 Sq. Ft. ADU, insulated 2-car garage with off-street parking. RMLS #20185494 \$1,495,000.

THE MYSTIFYING FOREST PARK GREEN
PACIFIC NW CONTEMPORARY CRAFTSMAN

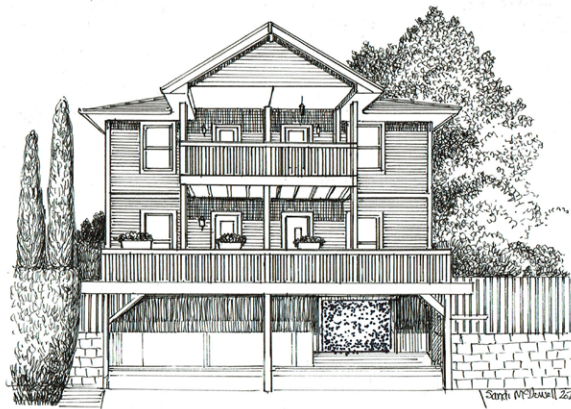


2329 NW Aspen Avenue

Feel the magic of wood, inside and out in this Green Gables 1995 Craftsman home. Oak floors, tongue and groove fir ceilings and cozy wood pellet stove wrapped in fossil stone. Detached garage with a lower studio/bonus. Stone fireplace on the deck for brilliant entertaining.

3 bedrooms, 3 full baths, den, 2,335 Sq. Ft., 2-car garage. RMLS #20642917 \$925,000.

IF YOU ARE DREAMING OF AN ENERGY
EFFICIENT CONDO — 9 HES SCORE
LIVE OR INVEST IN A BOISE-ELLIOT CONDOMINIUM



35 NE Tillamook Street, Unit D

A modern close-in townhouse style condo is nicely appointed with granite & stainless kitchen, hardwood floors, open floor plan and cozy gas fireplace. The 3 bedrooms (2 suites) are spacious with roomy closets. Secure entry to parking inside and out. 2 porches for fresh air and close proximity to the Mississippi district. Versatile 358 Sq. Ft. lower work/laundry room with garage door adds space for creativity, recreation or an additional car. 3 bedrooms, 3 baths, laundry room/art or workout studio, 1,762 Sq. Ft. total. RMLS #20021228, \$389,000.

“Thank you all so much for your professional, honest and straightforward guidance. You steered me with a light hand on the tiller and I am grateful for your advice and help.”

— Lynn Jennings

Specializing in Historic & Architecturally Significant Homes

THE DAN VOLKMER TEAM

DAN VOLKMER PRINCIPAL BROKER
BURDEAN BARTLEM, KISHRA OTT, MARDI DAVIS & FRITZ BENZ BROKERS
LICENSED IN THE STATE OF OREGON


Windermere
REAL ESTATE
WINDERMERE REALTY TRUST

503-781-3366

See our website at www.danvolkmer.com



Burdean, Dan, Mardi, and Kishra