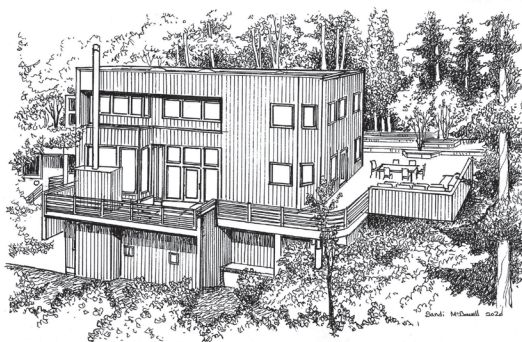


THANKFUL FOR SUNLIGHT AND SPACES

WELL-DESIGNED BY LOCAL ARCHITECT DAVID GIULIETTI, AIA



4640 SW18th Place

Living spaces and nature exist harmoniously in this custom 1989 Hillsdale/Terwilliger Heights home. Watch birds soar and branches dance in a breeze outside the dramatic two-story glass tower. Recipient of a prestigious AIA Peoples' Choice Award for its masterful design, open spaces, soaring ceilings and skylights.

3 bedrooms plus office, 2½ baths, family room, 2-car oversized garage, 3,101 Sq. Ft. RMLS #20114501 \$750,000.

APPRECIATE FRUIT TREES, FAMILY & FIREPLACES

MULTI-GENERATIONAL LIVING OPPORTUNITY IN RICHMOND NEIGHBORHOOD



4144 SE Franklin Street

Classic brick ranch on .25 acre lot with mahogany millwork, retro kitchen, original tile bath and gleaming ash floors. This home has spacious formal dining and living rooms, fruit trees (persimmons anyone?), decks and a covered patio with outdoor brick fireplace. Flexible spaces to suit your needs. 5 bedrooms, 3 baths, family room, crafts room, detached garage with bonus space, 3,768 Sq. Ft. RMLS #20557413 \$748,500.

“ I just reviewed your flyer for the subject property and I was blown away! It was like taking a virtual tour on paper, which is so important these days. The way you tied the description in with the photos, I felt like I was walking through the home! I've always been impressed by your flyers and your beautifully descriptive prose. Professional, historical, descriptive and informative at the same time.

Bob Harrington PC, Broker, Eleete Real Estate ”

GRATEFUL FOR FOREST PARK TRAILS

JUST UPHILL AND A .34 ACRE LOT WITH GARDENS, PATIOS & MOUNTAIN VIEWS



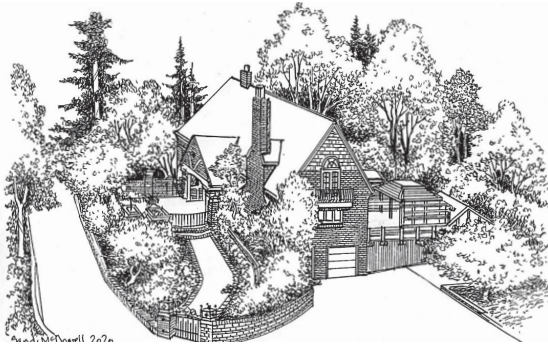
3410 NW Thurman Street

Architect Emil Schacht's elegant 1907 Willamette Heights home sits on 1/3 acre with a "top of the hill" feeling. The home flows to the outdoors, and if that isn't enough, Forest Park is nearby. Lower level is a full apartment with kitchen and bath and a separate entrance. Rare garage with tunnel into the home.

5 bedrooms, 4 baths, 4,021 Sq. Ft., 1-car attached garage, RMLS #20596819 \$1,150,000.

THANKFUL TO WRITE YOUR OWN FAIRY TALE

GREENHILLS RICHARD SUNDELEAF-DESIGNED 1927 HOME REMINISCENT OF A CASTLE



4469 SW Greenleaf Drive

Architect-designed storybook Tudor in Greenhills has a story to tell. Its hand-hewn beams, wrought iron hardware, turret bedroom, stained glass doors (David Schlicker), extensive Douglas fir accents, leaded glass and diamond pane windows (that view breathtaking sunsets) were created by artisans and local legends. It nestles in mature indigenous landscaping and has multiple garages for the classic car collector.

4 bedrooms, 2½ baths, bonus spaces, two detached 4-car garages, .48 acre lot, 2,972 Sq. Ft. RMLS #20521912 \$985,000.

Specializing in Historic & Architecturally Significant Homes

THE DAN VOLKMER TEAM

DAN VOLKMER PRINCIPAL BROKER

BURDEAN BARTLEM, KISHRA OTT, MARDI DAVIS & FRITZ BENZ BROKERS

LICENSED IN THE STATE OF OREGON


Windermere
REAL ESTATE
WINDERMERE REALTY TRUST

503-781-3366

See our website at www.danvolkmer.com



Burdean, Dan, Mardi, and Kishra