

**PENTHOUSE LOFT — CREATE A WHOLE
NEW LIFESTYLE
PEARL LIVING IN A CONVERTED WAREHOUSE**



**The Historic Marshall Wells
1420 NW Lovejoy Street, Unit #725**

This top floor unit at the Marshall Wells enjoys quiet courtyard peacefulness, dramatic 14' ceilings with old growth timber beams — all highlighted with natural light. Den has potential as a second bedroom. All gussied up with newer appliances, and some modern conveniences.

1 bedroom, den, 105 Sq. Ft. of storage, deeded parking, 1,140 Sq. Ft. RMLS #21162249 \$465,000.

**STIMULATE YOUR SENSE OF ADVENTURE
MOVE INTO A HISTORIC BUILDING IN THE
HOPPING NW NEIGHBORHOOD**

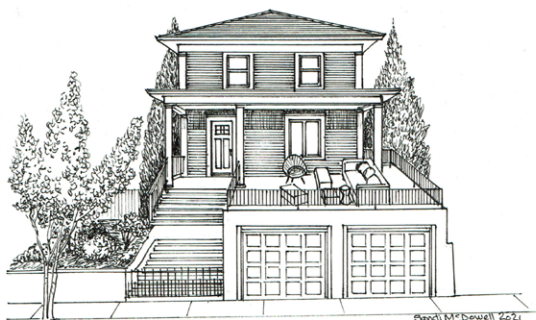


**The Historic Ball Parc American
2083 NW Johnson Street, Unit #20**

West facing corner unit condominium with character and charm galore. Active uptown living right out your front door, yet no common walls with other units keeps this condo quieter and private. Lots of big light windows and vintage feel with original Craftsman workmanship in the heart of the NW Alphabet District.

1 bedroom, 1 bath, 743 Sq. Ft., storage, 1 deeded parking spot. RMLS #21576157 \$295,000.

**EMBRACE URBAN CITY LIVING
WALK AND ROLL TO EVERYTHING AND LEAVE
YOUR RIDE IN THE 2-CAR GARAGE**



20 NE 22nd Avenue

A comfortable and convenient 1904 Craftsman home located in the lively Kerns neighborhood. An expansive front porch creates an inviting outdoor entertaining area and there is even a fenced backyard. All freshened and ready for move-in. There is a potential ADU in the basement, ready for your conversion.

3 bedrooms, 2,241 Sq. Ft., 2-car garage. RMLS #21126289 \$775,000.

**RECREATE ROMANCE IN THE ALPHABET DISTRICT
LET AN 1886 VICTORIAN CITY HOUSE CHANGE YOUR LIFE**



2067 NW Irving Street

Haven't you always wanted to live in a Victorian Era home with the tall ceilings, bent wood banisters, antique millwork and ceiling medallions? Here is your chance to dive in. The soaring ceilings, tall light windows, 2 fireplaces, a roomy open kitchen and a dramatic Arciform primary "bedroom" highlight the potential of this Victorian Lady.

3 bedrooms, 3 full baths, 3,192 Sq. Ft., 2 off-street parking spaces. RMLS #21159635 \$895,000.

“ The Dan Volkmer team has guided us from the sale of our old Portland home to the purchase of our wonderful townhouse to the sale of the townhouse followed by the purchase of our new condominium home. And we're sure they'll be there when we're ready for the old folks home. ”
— Steve Pierson

**GENERATE NEW INCOME WHILE LIVING
IN URBAN BLISS
AT THE BASE OF KING'S HILL NEXT TO
EVERYTHING**



743 SW Vista Avenue

1904 was a good year for Craftsman architecture and this tidy jewel box duplex at the foot of the Historic Kings Hill neighborhood is no exception. Owner occupy one unit and rent the other. Don't forget the secret garden oasis in the back yard. Walk score 96.

Main floor unit A — 1 bedroom, 1 bath, 813 Sq. Ft.
Upper level unit B — 2 bedroom, 1 bath, 1,425 Sq. Ft.
RMLS #21384613 Both offered at \$725,000.

Specializing in Historic & Architecturally Significant Homes

THE DAN VOLKMER TEAM

DAN VOLKMER PRINCIPAL BROKER
BURDEAN BARTLEM, KISHRA OTT, MARDI DAVIS & FRITZ BENZ BROKERS
LICENSED IN THE STATE OF OREGON


Windermere
REAL ESTATE
WINDERMERE REALTY TRUST

503-781-3366

See our website at www.danvolkmer.com



The Dan Volkmer Team:
Dan, Kishra, Mardi, Fritz and Burdean