

YOU BELONG AMONG THE WILD FLOWERS
OF FOREST PARK
*Light-filled end unit with views of lush
grounds and 100+ trees*

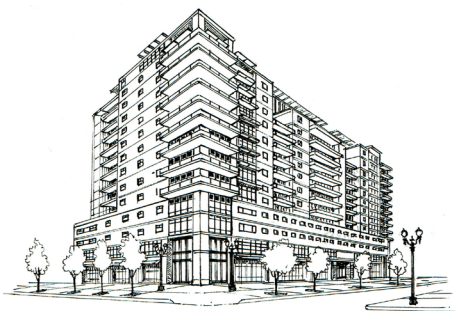


Old Forestry Commons
2815 NW Upshur, Unit D

JUST SOLD: The largest unit at the Old Forestry Commons Condominiums. Living here, one feels far away from the bustling city. This rare end unit, tucked away from the street, offers 3 walls of windows and 2 skylights, plus an inviting patio looking out to mature trees and lush lawns. Thoughtful updates to surfaces and systems ensures comfort in this verdant two-story condo. Surrounded by more than 100 trees—some were here when the Old Forestry Building stood here—the convenient location allows you to leave the car in the garage and stroll to nearby amenities. 2 bedrooms + den, 2 full baths, in-unit laundry and private garage with storage closet. 1,580 total Sq.Ft., MLS# 22148635



THE ROSE ABOVE THE SKY
Tend an Urban Garden on a Deck with City View



1025 NW Couch Street #1312

Soak up the drama of a century of Portland architecture from a south-facing Henry Condominium. Highly regarded center Great Room concept with 9'10" floor-to-ceiling windows and a 26' x 4'7" deck perfect for morning coffee from the built-in espresso machine in the kitchen. Master suite and guest suite flank the center public rooms and all spaces are finished with style and sophistication. The center of the city in The Pearl, with the Cultural District and the many venues of close-by neighborhoods just a Streetcar ride away. 2 bedrooms, 2 baths, 1,726 Sq. Ft., parking, concierge RMLS #1020146069 \$1,050,000.

VICTORIAN BEAUTY BLOOMS IN THE GARDEN
AS WELL AS THE HEART



2737 SW 1st Avenue

Is it 1907 or 2022? Lovingly restored with all today's amenities but with a tip of a hat to the essence of Victoriana. Two flats make the home perfect for an owner occupied duplex with off-street parking and a shared patio surrounded by mature plantings. Each unit is flavored with natural wood trim, wainscoting and fir flooring is highlighted by light walls and big, sunny windows. Stained glass sparkles over windows and doors, ornate millwork frames built-ins and banisters and an updated kitchen finished in a period feel makes this home a dream come true for a historian or Victorian lover. Lair Hill area means close to downtown with biking, walking and bus line access. 2 units, each with one bedroom and one full bath. RMLS #22696966 \$775,000.

**MEET ME IN THE GREENHOUSE OF THIS 1904
ENGLISH MANOR**
by celebrated Architects Whidden & Lewis



1942 SW Montgomery Drive

Prepare to be ruined for all other homes in this Old World manse meets modern residence. Once you've reached the gate and the front door comes into view, you feel you've entered a very private world that is serene and beautiful. New infrastructure, systems and surfaces elevates the standard for Portland living. Four recently refinished floors of impeccable craftsmanship flow seamlessly together offering a modern, carefree living experience. 5 bedrooms, 4 1/2 baths, 6,424 Sq. Ft., two-car attached garage and wine cellar, ADU with 1 bedroom, 1 bath with private laundry and separate entrance. 11,200 Sq. Ft. lot with private auto access, heated pool, outdoor kitchen and that greenhouse! RMLS #22618716 \$3,750,000.

Specializing in Historic & Architecturally Significant Homes

THE DAN VOLKMER TEAM

DAN VOLKMER PRINCIPAL BROKER
BURDEAN BARTLEM, KISHRA OTT, MARDI DAVIS & FRITZ BENZ BROKERS
LICENSED IN THE STATE OF OREGON



503-781-3366

See our website at www.danvolkmer.com



The Dan Volkmer Team:
Dan, Kishra, Mardi, Fritz and Burdean