

## PARADE AROUND YOUR LEVEL HALF ACRE UNDER THE STARLIGHT

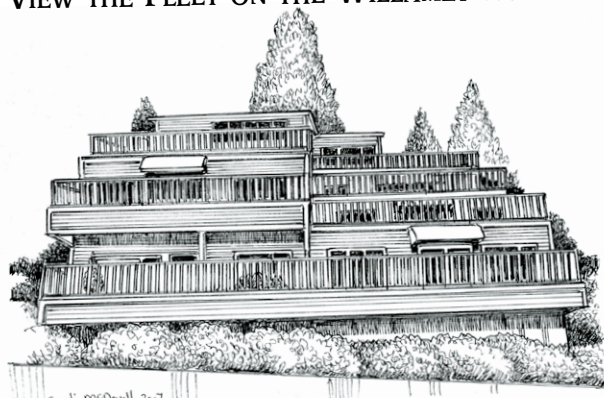


### 7907 NW Gales Ridge Lane

When was the last time you could walk a half acre level yard at 1000-foot elevation? Custom built for the current owners in 1993, this spacious home was designed to reflect the style and quality of detail found in Connecticut colonials. The center hall floor plan with 9-foot ceilings, pocket and French doors, and Georgian-style windows allows natural light to flood every corner. The master suite is the entire northeast side of the second floor with beautiful treed outlooks, a walk-in closet, and his and hers vanities in the bathroom. The lower level has 8-foot ceilings, insulated outer walls, and plumbing for a full bath, ready for your creative plans—media room, bedrooms, workout area—you choose.

3 bedrooms, 2 full and 1 half baths, 5,365 total Sq. Ft. on 1/2 acre level lot. MLS# 10041266 \$695,000.

## WAVE TO THE SAILORS ON THE BALCONY AND VIEW THE FLEET ON THE WILLAMETTE RIVER



### 2336 SW Cactus Drive

This sleek, light-filled condo, with panoramic city and mountain views, offers an ideal floor plan with elegant spaces for entertaining or casual impromptu gatherings. The beautifully updated kitchen opens to the dining area with access to the big 4-mountain-view deck. Situated in a prime location near Washington Park, with off-street parking and around the corner from all of the neighborhood's cafés, shops, boutiques, parks & transportation, just move in and enjoy the view in one of Portland's most sought-after neighborhoods.

2 bedrooms, 2 full baths, 1,000 Sq. Ft. plus view deck, 2 storage units, and 1 deeded parking space. MLS# 10043135 \$285,000.

## THE ROSE FESTIVAL ART SHOW COULD BE HELD IN THIS VENUE DESIGNED BY DICKEL AND HUNTINGTON



### 1814 NW 28th Ave

Featured in HGTV's "Homes Across America," this unique home was transformed for the current owner from a generic rowhouse into a classically regal showplace with master interior designer Mirza Dickel. Wallace Kay Huntington, Oregon's legendary landscape architect, designed the private outdoor terrace. Location is tops—one block west is the entrance to Portland's urban wilderness, Forest Park, with trailheads to miles of hiking or biking. A half block south awaits the trendy Thurman Corridor, a cornucopia of delightful neighborhood essentials—organic grocery, wine store, French bakery, health spa, coffeehouses, art galleries, bike store, dry cleaners, restaurants, and more. Freeway access is 5 short blocks away. Art collectors, cooks, bon vivants and lovers of urban life will all love this unique home.

3 bedrooms, 2 full and 1 half baths, 2,719 total Sq. Ft. MLS# 10040918 \$615,000.

## WALK TO THE ROSE GARDEN FROM THE QUEEN OF PORTLAND HEIGHTS

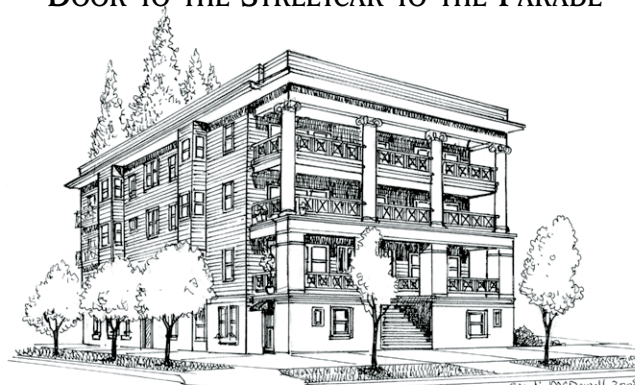


### 1725 SW Prospect Drive

Portland's most renowned architect, A.E. Doyle, created here a harmonious marriage of grand and majestic spaces with the soul of a place that feels like home. Grand millwork and inlaid oak floors are throughout, and you can see the huge rhododendrons that line the yard out of almost every window. The living room's diamond-paned windows frame city and mountain views, and the dining room has original secret panels that some say were used to hide wine and spirits during Prohibition. On a secluded lane peering over the city and mountains with convenient access to downtown Portland, Washington Park, and the International Rose Test Gardens, this special home is available for the first time in 42 years.

4 bedrooms, 3 full and 1 half baths, 5,369 total Sq. Ft. on a 1/4 acre lot. MLS# 10030983 \$1,095,000.

## GRAND FLORAL WALK FROM YOUR FRONT DOOR TO THE STREETCAR TO THE PARADE



### 2387 NW Northrup Street, #3—The Grace

This wonderful historic building has the charm and details of a New Orleans-style building in the French Quarter. The unit boasts oversized rooms filled with the original woodwork, moldings, and pocket doors. The cozy kitchen has tile countertops, period-appropriate cupboards, a gas range and new laminate flooring, and the bath has a pedestal sink, and claw-foot tub with shower. The bedroom has an at-the-beach feel, with painted floors and natural light streaming in. Ideally located near the Historic Alphabet District, you're mere blocks from wonderful parks, cafés, eateries, boutique shopping, transportation, and culture.

1 bedroom, 1 full bath, 787 Sq. Ft. MLS# 10043838 \$175,000.

# THE DAN VOLKMER TEAM

DAN VOLKMER PRINCIPAL BROKER  
BURDEAN BARTLEM, KISHRA OTT & ANNE YOO, BROKERS  
WALTER AND TED, TOO.

*For your real estate needs in the Northwest neighborhood.  
Call us to find out your property's top market value.*

**Windermere**  
Cronin & Caplan Realty Group, Inc.

**503-497-5158**

[www.danvolkmer.com](http://www.danvolkmer.com)



Anne, Burdean, Kishra, Dan, Walter & Ted