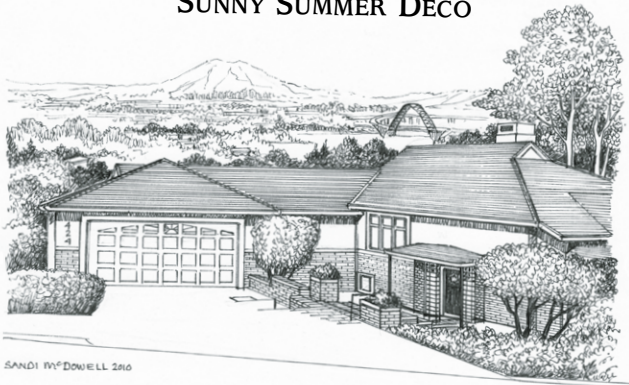


## 1938 ARCHITECT'S ART WORK SUNNY SUMMER DECO



SANDI McDOWELL 2006

### 424 NW Maywood Drive

Just a touch of Art Deco and a smidge of Mid-Century Modern, stirred together with 1930's old-Hollywood and a lot of Craftmanship and *voilà!*: A stunning conversation piece. Cocktail chat under the uplit barrel-vaulted ceiling of the living room will center around Architect Roi L. Morin who stepped into his own with wood and glass used in a harmonious blend of lines and curves. Delightfully original the detail remains: dramatic overhead light fixtures, tiled floors, built-ins and original wet-bar, tiger-maple floors, 2 wood-burning fireplaces and period hardware. Mountain and river views from most rooms. The 14,000+ square foot lot backs to NW Marlborough, allowing terraced garden opportunity.

3 bedrooms, 3 full baths, 2 car garage, 3,017 Sq. Ft. MLS# 10048959 \$650,000.

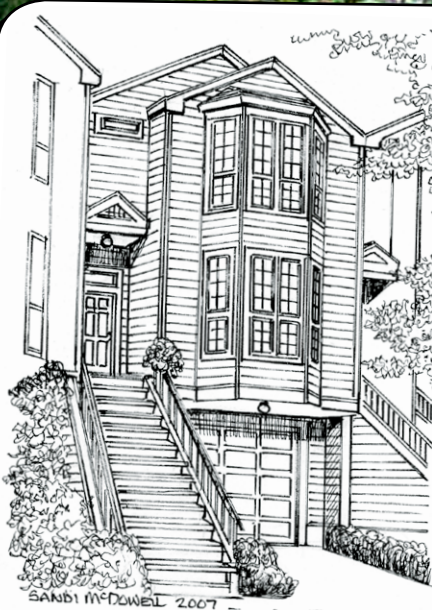
## SUMMER IN THE CITY

### DINE ON THE DECK OR HANG OUT ON THE STOOP

#### 2736 NW Upshur Street

This sparkling, light and bright town home is situated on a quiet, leafy street in the heart of urban NW Portland. The extra-wide floor plan is an open living room and dining room off the kitchen with wood floors, high ceilings, a true wood-burning fireplace and a wonderful deck overlooking a peaceful private backyard. Each bedroom upstairs has its own private bath, vaulted ceilings, and walk-in closets. The extra long 2-car garage offers interior access and plenty of storage for bikes, kayaks, and camping gear. Leave the car and walk through one of Portland's most coveted neighborhoods with groceries, spas, galleries, coffee, restaurants, the MAX line and the vitality of NW 23rd Avenue.

2 bedroom, 2 & 1/2 baths, 1,916 Sq.Ft. MLS #10039355 \$415,000.



SANDI McDOWELL 2007

## ENGLISH TUDOR WITH ENGLISH GARDEN VIEW 4TH OF JULY FIREWORKS & SUMMER ROSES



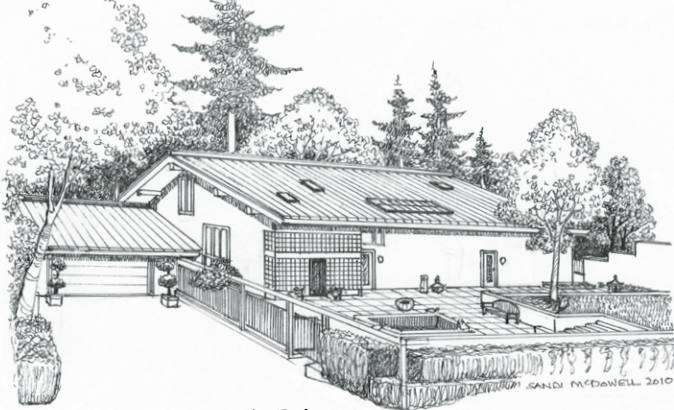
SANDI McDOWELL 2010

### 2857 SW Champlain Drive

Let's celebrate Independence Day in an English style home with American quality workmanship. The elegant, light-filled, entertaining spaces view Mount Hood and are perfect for an old-fashioned American barbeque. We'll dine *al fresco* on the entertaining view deck and admire the dramatic American-made architectural detailing in this home which includes: wrought-iron railings, plaster and tile fireplace, leaded glass window accents, moldings, hardware and tiled baths. The 2 tax lots combine to give you almost 1/3 of an acre and stretch from SW Champlain to SW Fairview, preserving the view. This coveted Arlington Heights neighborhood is only minutes from the Washington Park Rose Garden, Japanese Garden and nearby NW 23rd Avenue.

4 bedrooms, 3 & 1/2 baths, 3,162 finished Sq. Ft. MLS# 10051043 \$825,000.

## CONTEMPORARY COOL—ARCHITECT DESIGNED OUTDOOR KITCHEN IN WASHINGTON PARK



### 3216 SW Upper Cascade Drive

Summer entertaining like they do in Hollywood—except that our dazzling white kitchen that opens to an expansive entertaining deck, complete with outdoor granite kitchen has southern exposure and views of the Pacific NW woodlands of Washington Park. The sleek, light-filled custom home, designed by architect Ralph Appleman, is nestled on a tranquil forested hillside. The entry is through a Japanese garden-style courtyard with a wisteria and rose arbor, bordered by 5 bearing fruit trees, and all-white flowering plants. Inside, the drama continues with floor-to-ceiling windows, tongue-and-groove ceilings with exposed finished beams, light oak floors and white brick. All of this just minutes to downtown Portland, Uptown/Nob Hill and an easy Hillsboro commute.

4 bedrooms, 3 full & 1 half baths, 4,642 Sq. Ft. MLS# 10049031 \$950,000

# THE DAN VOLKMER TEAM

DAN VOLKMER PRINCIPAL BROKER  
BURDEAN BARTLEM, KISHRA OTT & ANNE YOO, BROKERS  
WALTER AND TED, TOO.

*For your real estate needs in the Northwest neighborhood.  
Call us to find out your property's top market value.*

**Windermere**  
Cronin & Caplan Realty Group, Inc.

**503-497-5158**

[www.danvolkmer.com](http://www.danvolkmer.com)



Anne, Burdean, Kishra, Dan, Walter & Ted