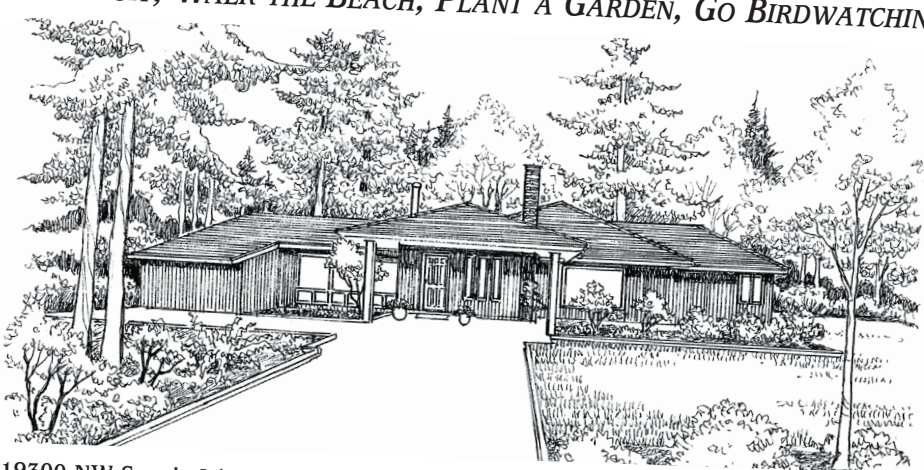




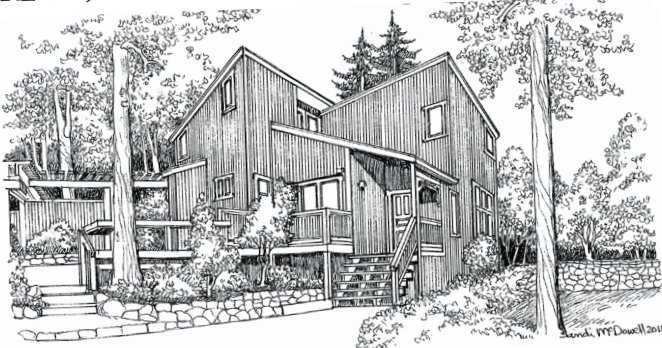
SUMMER ON THE ISLAND
PICK FRUIT, WALK THE BEACH, PLANT A GARDEN, GO BIRDWATCHING



19300 NW Sauvie Island Road

One of the natural world's ecological jewels, Sauvie Island, is a nature preserve the size of Manhattan and a major flyway for over 200 bird species. This piece of paradise is an acre and a half of level gardens and old-growth woods with a certified Backyard Wildlife Habitat of over 700 native species plants. The house is custom made for the setting at a price you could justify for a second home. The walls of windows, the Philippine mahogany and fir trim throughout bring to mind wilderness resort living — especially the master/family room wing with fireplace, wet bar, river access and more. You'd never know you are a 20-minute drive from Portland's city center. 3 bedrooms, 2 baths, oversized garage, 2200 sq.ft. on a 1.48 acre lot, ML# 11558911 \$450,000

SUMMER IN THE WOODS
RELAX, REFRESH, WRITE A BOOK, PAINT A PICTURE



1536 SW Highland Parkway

Michael Schultz Landscape created a private wooded bloom-rich landscape with rockery, massive stone walkways, trellises and pergolas and Architect George Sheldon designed a light-filled Pacific NW regional-style home that is perfectly complimented by this garden setting. Three big decks, two dining areas, and a warm country/caterer's kitchen with commercial grade appliances are an entertainer's dream. An oversized two-car garage with office loft and separate live-or-work studio/apartment complete the package on two separate tax lots. All this is within 5 minutes of NW Portland or routes west. 3 bedrooms, 2 1/2 baths in the 1942 sq.ft. main house, plus 560 sq. ft. guest studio with 1 bath & kitchenette, oversized two-car garage, ML# 11361943 \$675,000

SUMMER IN THE CITY
WALK TO PARKS, WATCH PASSERSBY, DINE AL FRESCO



1723 NW 25th Avenue

This is the catbird seat for enjoying everything Portland has to offer in the summer. Morning sunshine and a cuppa on the front deck. An afternoon hiking just-up the-street Forest Park. An evening of fine dining in one of NW 23rd's Zagat-rated restaurants, or eat in on your big landscape-framed deck off your granite and stainless kitchen, with fresh ingredients from the local gourmet shops, co-op, or Farmer's Market a streetcar ride away. The two bedroom suites complete the perfect PDX urban living experience. 2 bedrooms, 2 1/2 baths, 2-car garage, 1472 sq. ft. ML#11687323, \$450,000



THE DAN VOLKMER TEAM

DAN VOLKMER PRINCIPAL BROKER
 BURDEAN BARTLEM, KISHRA OTT & ANNE YOO, BROKERS
 WALTER AND TED, TOO.

*For your real estate needs in the Northwest neighborhood.
 Call us to find out your property's top market value.*

Windermere
 Cronin & Caplan Realty Group, Inc.

503-497-5158

www.danvolkmer.com



Burdean, Kishra, Anne, Dan, Walter & Ted