

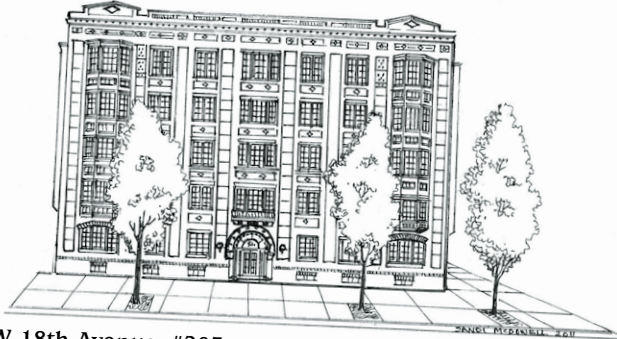
SAN FRANCISCO: THE GEORGE H. WILLIAMS REFINED HAIGHT-ASHBURY FEEL



133 NW 18th Avenue, #4

A Victorian grande dame with a proper combination of updates and restoration, this northeast corner unit is flooded with light pouring through the almost-floor-to-ceiling windows into the elegantly proportioned rooms with 11 ½-foot ceilings. The 1883 architecture creates a refined space in which to live, entertain, relax and enjoy life in Portland. In the Historic Alphabet District, you're just steps away from everything that has made this neighborhood one of Portland's most desirable: the Pearl, NW 23rd and NW 21st. 2 bedrooms. 2 full baths, 1,506 Sq.Ft. 1 secured parking space, large storage unit. MLS #11417391 \$439,000.

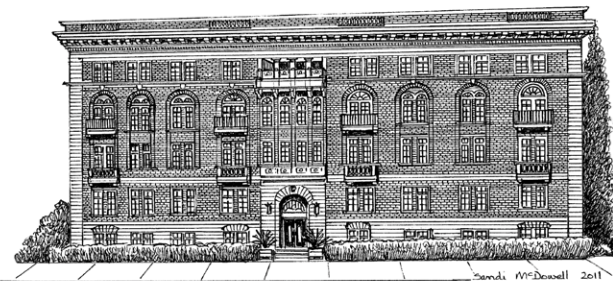
PARIS: THE WICKERSHAM FRENCH STYLE, PORTLAND VIBE



410 NW 18th Avenue, #203

Feels like a French *pied-à-terre*, but you're actually smack in the middle of Portland's most vibrant urban neighborhood. In a beautiful 1910 Beaux Arts building, this light-filled corner unit with windows on the north, east, and west sides offers gorgeous oak floors, large windows, 10-foot ceilings, renovated kitchen and bath, and leafy treed views of the historic Alphabet District. Leave your car in your secured off-street parking space—the MAX and Streetcar are only five short blocks away. Portland's own *Île de la Cité*! 3 bedrooms, 1 bath, 1,283 Sq. Ft. 1 secured off-street parking space. MLS #11655801 \$359,975.

WASHINGTON DC: THE EMBASSY TIMELESS NEOCLASSICISM



2015 NW Flanders Street, #406

This refined, updated and charming condo in the historic Beaux Arts Embassy Building has elegant architectural details: 3 sets of French doors, 6 Palladian windows, and 2 balconettes capturing views of nearby historic properties, grand trees and neighborhood life. The tastefully updated kitchen and bath honor the old-world charm of 1925. Leave the car in the deeded off-street parking space and immerse yourself in the coveted Historic Alphabet District. Another thing to enjoy: the historic tax designation that keeps your property taxes low until 2014! 1 bedroom, 1 full bath, 886 Sq. Ft., 1 deeded off-street parking space. MLS #11461084 \$299,000.

ATLANTIC CITY: BOARDWALK ON PARK PLACE NO MONOPOLY® ON STYLE



2172 SW Park Place, Unit B

One-level living with classic design makes this Boardwalk Condominium just what you have been searching for. It was designed specifically to blend seamlessly with the neighboring historic homes of the King's Hill neighborhood. You can entertain with ease in this convenient, open floor plan—one room to the next or on the private brick patio—perfect for relaxing or dining *al fresco*. Both the spacious master suite and guest room have their own patio access as well. 2 secure parking spaces and elevator access to this one-level unit makes for the perfect urban lifestyle living in this uptown neighborhood. 2 bedrooms + den, 2 ½ baths, 2,595 Sq. Ft., 2 assigned parking spaces. MLS #11360151 \$675,000.

THE DAN VOLKMER TEAM

DAN VOLKMER PRINCIPAL BROKER
BURDEAN BARTLEM, KISHRA OTT & ANNE YOO, BROKERS
WALTER AND TED, TOO.

*For your real estate needs in the Northwest neighborhood.
Call us to find out your property's top market value.*

Windermere
Cronin & Caplan Realty Group, Inc.

503-497-5158

www.danvolkmer.com



Burdean, Kishra, Anne, Dan, Walter & Ted