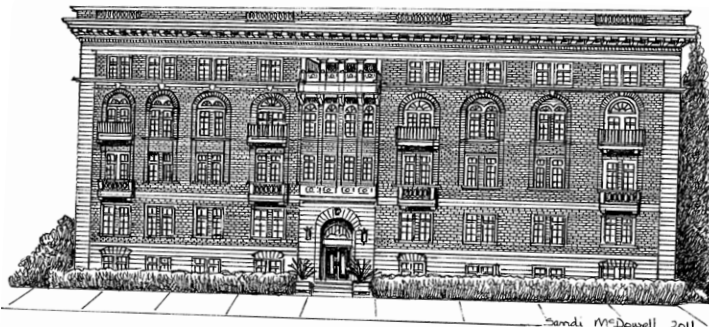


**VIEW FALL COLORS ON TREE-LINED CITY STREETS
NATIONAL HISTORIC ALPHABET DISTRICT—
A GREAT WALKING NEIGHBORHOOD**



2015 NW Flanders Street, Unit 407

South light brightens the kitchen and living room of this Classic 1923 Beaux Arts Building—the Embassy Condominiums. Cutting-edge in 1923, its period doors, moldings and hardwoods still shine and the remodeled kitchen and polished fixtures fit the 1920s feel.
1 bedroom, 1 bath, 785 Sq. Ft. and 1 parking space. MLS# 12190940, \$263,900.

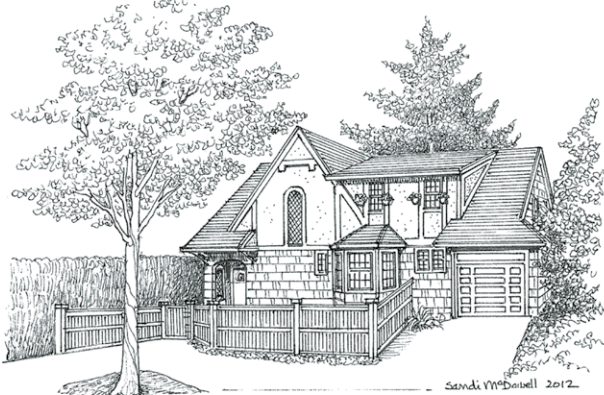
**RUSTLE THROUGH THE LEAVES
HIGH-END NEW CONSTRUCTION
OVERLOOKING AUTUMN FORESTS**



307 NW Meridian Ridge Court

The happy sound of hammers and saws is a welcome harbinger of good things to come. The best thing we've seen is this Pacific NW's answer to a Prairie Style house in an out-of-the-way enclave that is 5 minutes to NW 23rd Avenue and an easy commute to Hillsboro and Beaverton.
3 bedroom, den, 2½ baths, 2,737 Sq. Ft. and a 3-car garage
MLS# 12270547 \$699,000.

**PUMPKINS ON A WHITE PICKET FENCE
COZY ELEGANCE WITH PERSONALITY**



2965 NW Cornell Road

1929 English Craftsman on Westover Terraces is refined and elegant and close to all things NW Portland. Walk down a short hill to Chapman School and NW 23rd. The other direction takes you to Forest Park. The home has been maintained with a loving hand and a creative eye.
3 bedroom, 1½ baths, 2,030 Sq. Ft. MLS# 12459962 \$519,000.

**PERFECT PORCH FOR A HARVEST SCENE
MIDWAY BETWEEN 23RD AVENUE AND WALLACE PARK**



1333 NW 24th Avenue

An architectural rehabber's dream—this solid, sturdy Colonial Revival's big windows and architectural details can seduce the most dedicated historical preservationists and the most creative designers. Situated on the edge of a flat 15,000. Sq. Ft. lot in one of the most desirable parts of the NW neighborhood.
5+ bedrooms, MLS# 12413022, \$995,000.

THE DAN VOLKMER TEAM

DAN VOLKMER PRINCIPAL BROKER
BURDEAN BARTLEM & KISHRA OTT, BROKERS

*For your real estate needs in the Northwest neighborhood.
Call us to find out your property's top market value.*

Windermere
Cronin & Caplan Realty Group, Inc.

503-497-5158

See our new website at www.danvolkmer.com



Dan, Kishra, Burdean, Watson & Ted