

WEE BIT O'VICTORIANA, THE ALPHABET  
DISTRICT'S QUINTESSENTIAL 1890s HOME



LIVING IN THE HEART OF NW IS NOT BLARNEY,  
BUT A LUCKY LOCATION

A blend of original character with today's  
updates at 2347 NW Kearney Street.

3 bedrooms, 2 full baths, 1 off-street parking  
space, 1,813 Sq. Ft. MLS #15081280 \$850,000.

LIVE LIKE JACKIE O—MANHATTAN WEST SIDE

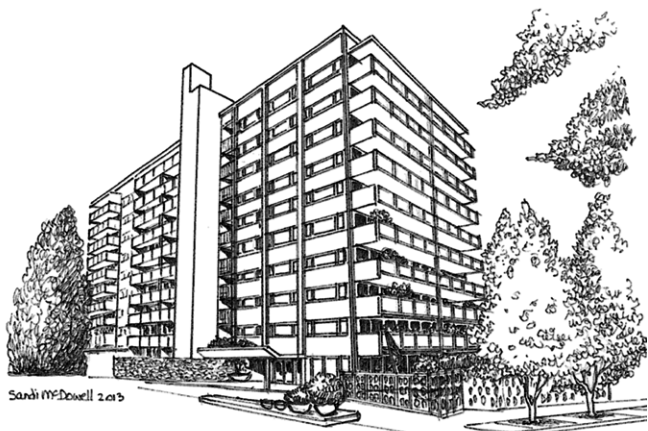


705 DAVIS CONDOMINIUMS—THE RICH STYLE AND  
ARCHITECTURAL PANACHE THAT IS ALWAYS IN FASHION

The Alphabet District's most desirable historic  
home at 2141 NW Davis Street, #502.

3 bedrooms, 2 full baths, 1-car parking garage  
spot, 1,933 Sq. Ft. MLS #16274569 \$899,000.

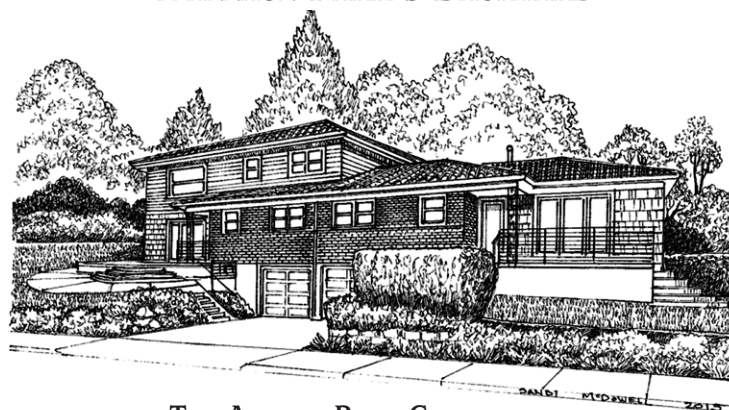
"MAD MEN" DELUXE AT A 1960's PRICE



THE PARK VISTA COOPERATIVE: A SPACIOUS  
MID-CENTURY IN THE KING'S HILL NEIGHBORHOOD  
One-level, 2,726 Sq. Ft., all glass on 3 sides with  
private "Wallace Kay Huntington" 3,495 Sq. Ft.  
Garden at 2323 SW Park Vista, Unit 105/106.

3 bedrooms, 3 baths, 2 garage parking spots,  
Concierge Services MLS #16244038 \$459,000.

BOOMER DOWN-SIZERS  
WALLACE PARK'S BACKYARD



THE ARTHUR PARK CONDOMINIUM

An open floor plan and giant glass doors &  
windows make you want to go outside and  
be healthy at 1429 NW 27th Avenue.

3 bedrooms, 2½ baths, 1-car garage,  
1,646 Sq. Ft. MLS #16256213 \$749,000.

# THE DAN VOLKMER TEAM

DAN VOLKMER PRINCIPAL BROKER  
BURDEAN BARTLEM, KISHRA OTT & MARDI DAVIS BROKERS  
LICENSED IN THE STATE OF OREGON

*For your real estate needs in the Northwest neighborhood.  
Call us to find out your property's top market value.*

Windermere  
REAL ESTATE

Windermere Stellar

503-497-5158

See our new website at [www.danvolkmer.com](http://www.danvolkmer.com)



Burdean, Dan, Mardi, and Kishra