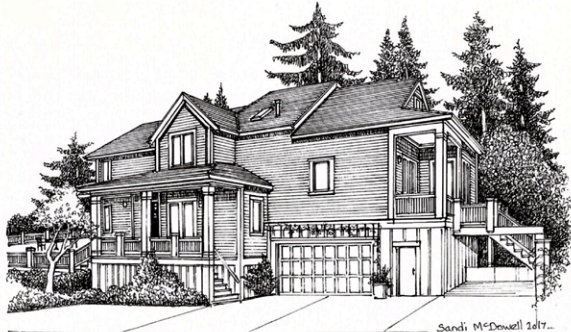


TAKE A MEDITATIVE HIKE IN THE 126-ACRE
MARQUAM NATURE PARK THAT IS YOUR NEIGHBOR
NEAR OHSU & TRANSPORTATION



3424 SW 14th Avenue

Condo alternative means easy maintenance but no HOA dues. Absolute perfection for the discerning professional who wants a quality, convenient, custom home with spacious ADU near OHSU. High-end finishes and services. 4 bedrooms, 4 & ½ baths, apartment/ADU, 2-car garage, 4,181 Sq. Ft. MLS# 17695163 \$825,000.

EASY TO LOCK IT AND GO ON THOSE
STRESS-FREE VACATIONS
PARK VISTA COOPERATIVE



2323 SW Park Place, Unit 201 — COMING SOON

Architect Victor Noble Jarrett Jones designed this solid building in 1960. It is one-level living, with a concierge, a central location and a spacious balcony with historic King's Hill neighborhood outlook. 2 bedrooms, 2 full baths, big storage and parking, 1,320 Sq. Ft. MLS# 17613478

SIT BACK, RELAX & WATCH THE WORLD
GO BY FROM THE NEIGHBORHOOD STOOP
THE VALENCIA CONDOMINIUMS



2375 NW Northrup Street Unit A — READY TO VIEW 6-12-17

Old Nob Hill Craftsman style and high-quality modern updates located just a block from the Streetcar and NW 23rd Avenue amenities. Doors to backyard patio and covered front porch.

2 bedrooms, den, 1 & ½ baths, eat-in kitchen, 1,336 Sq. Ft. MLS# 17433120 \$589,000.

SMELL THE ROSES IN THE CALM & TRANQUIL GARDEN
OR KICK THE SOCCER BALL IN THE SPACIOUS BACK YARD



4727 SW Snyder Place — READY TO VIEW 6-12-17

On a Bridlemile "street of dreams," this traditional 1992 home was highly designed with carefully planned architectural details. You will feel at home immediately because of the big windows, thoughtful juxtaposition of vistas and outlooks, the distribution of light, the quality detail and the comfortable spacial perspective. The garden is a dream come true for the outdoor enthusiast and backs to a shared natural open space.

4 bedroom, 4 baths, den, 3-car garage, 3,432 Sq. Ft. MLS# 17505097 \$799,000.

PUT YOUR FEET UP AND ENJOY MOUNTAIN
VIEWS FROM THE PEACEFUL BALCONY
THE WESTERLY CONDOMINIUMS



2351 NW Westover Road, Unit 1002 — SALE PENDING

Above the busy streets and active neighborhood is a quiet balcony where you can touch the clouds and find serenity. The Westerly, built in 2007, has luxury finishes and an unbeatable location.

2 bedroom suites, 2 & ½ baths, 2 parking spaces, storage and concierge, 1,942 Sq. Ft. MLS# 17497494 \$1,375,000.

THE DAN VOLKMER TEAM

DAN VOLKMER PRINCIPAL BROKER

BURDEAN BARTLEM, KISHRA OTT & MARDI DAVIS BROKERS

LICENSED IN THE STATE OF OREGON

For your real estate needs in the Northwest neighborhood.

Call us to find out your property's top market value.

Windermere
REAL ESTATE

Windermere Stellar

503-497-5158

See our website at www.danvolkmer.com



Burdean, Dan, Mardi, and Kishra