

IT'S THE MOST WONDERFUL TIME OF THE YEAR  
TO VIEW HOLIDAY LIGHTS FROM ABOVE VISTA AVENUE

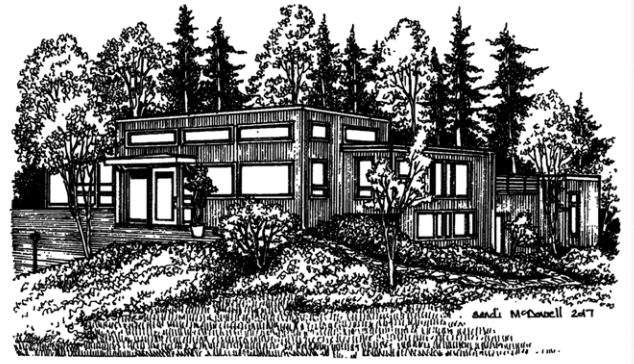


**The Park Vista, 2323 SW Park Place, Unit 502**

Throw a mid-century themed holiday party at The Park Vista Coop. Sip cocktails on the balcony with views of Mt. Hood while listening to Andy Williams croon. This 1960's high-rise building's exterior was refurbished and this unit is ready for a new interior life as well. Walkable location in the heart of active SW/NW Portland.

2 bedrooms, 2 baths, approx. 1,500 Sq. Ft., parking and approx. 200 Sq. Ft. storage space. RMLS #17094783 \$295,000.

WHAT ARE YOU DOING NEW YEAR'S EVE?  
CELEBRATE IN A PACIFIC NW SETTING IN THIS  
TIMELESS CONTEMPORARY



**5445 SW Burton Drive**

Architect Otto Ritter's mid-century design for his personal residence, built in 1963, was enhanced by Saul Zaik. It is a modern masterpiece nestled into the Pacific NW forest. A peaceful and aesthetic blend of wood and window, space and light, indoor and out. 6 minutes to NW 23rd Avenue.

4 bedrooms, 3 full baths, 2,988 Sq. Ft., 3 fireplaces and delightful indigenous gardens. RMLS #17317252 \$1,245,000.

## TEN REASONS TO PROTECT AND PRESERVE OUR — NORTHWEST CULTURAL CENTER —

1. A registered national historic landmark in the heart of a registered **National Historic District!**
2. Portland's finest example of Beaux Arts classic architecture inspired by Athens's Pantheon and Rome's Parthenon.
3. Acquiring this building in the '70s was the catalyst that sparked NW Portland's renaissance.
4. Prominent architect, Solon Spencer Beman, designed for the Chicago World's Fair of 1893, designed the nation's first company town for the Pullman Palace Car Company, and was the architect of choice for Church of Christ, Scientist, temples throughout the U.S.
5. As the southeast gateway into Northwest Portland, it sets the tone to expect great things from the neighborhood — great design, respect for sacred places, honor for the past, and prominent children's spaces.
6. The greenest, most sustainable building is the one that doesn't end up in the landfill.
7. It is one of a cluster of "flagship" buildings serving major religious institutions that congregated in Northwest Portland. Trinity Episcopal, St. Mary's Cathedral, Temple Beth Israel, First Immanuel Lutheran and Church of Christ, Scientist, form a sizzling vortex of spiritual energy in their togetherness.
8. Symbolizes a conscious choice to preserve neighborhood history while promoting a nonprofit arts, educational and cultural venue.
9. Honors diversity — under the big chrome dome, social groups from all walks came for aid and comfort and inspiration, the hungry, young thespians, radical women, Bible studies, political aspirants — all were welcome.
10. *Once it's gone, it can never be replaced.*

*Specializing in Historic & Architecturally Significant Homes*

# THE DAN VOLKMER TEAM

DAN VOLKMER PRINCIPAL BROKER

BURDEAN BARTLEM, KISHRA OTT & MARDI DAVIS BROKERS

LICENSED IN THE STATE OF OREGON

  
**Windermere**  
REAL ESTATE  
WINDERMERE REALTY TRUST

503-497-5158

See our website at [www.danvolkmer.com](http://www.danvolkmer.com)



Burdean, Dan, Mardi, and Kishra