

**CLASSIC AMERICAN CRAFTSMAN  
INCLUDES EXTRA GARDEN LOT  
VIEW MT. ST. HELENS AND WILLAMETTE RIVER**

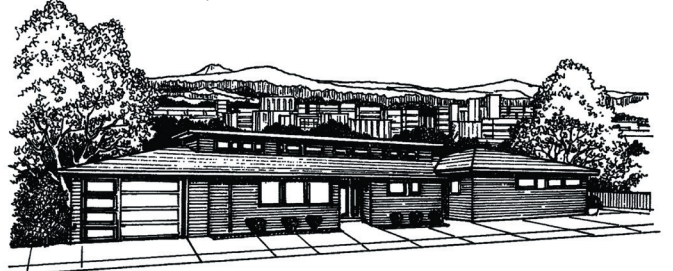


**3524 NW Thurman Street**

Not too big or too small—just the right size Willamette Heights Craftsman. As much outdoors as indoors, a cook's kitchen and warm comfortable spaces stand out in an updated and beautifully maintained home.

3 bedrooms, 3 baths, 2,729 Sq. Ft., 8,300 Sq. Ft. garden. RMLS #18523270 \$1,295,000.

**SLEEK SENSUAL SEXY CONTEMPORARY  
VIEW FROM ST. JOHNS BRIDGE TO SOUTH OF MT. HOOD**



**1264 NW Summit Avenue**

Great room living with panoramic views that encompass all of Portland. Condo alternative, Steelhead architect design in a turn-of-the-century neighborhood. Close enough to walk everywhere in close-in NW Portland.

3 bedrooms, 2 & ½ baths, 3,007 Sq. Ft. RMLS #18508530.

**CABIN COZY ALL DRESSED UP  
VIEW TREES AND NATURE**



**605 SW Arboretum Circle**

Arboretum nature trails are just around the corner and you'll have time to use them in this easy-care home recently updated and ready for move-in. Warm great room living with stainless kitchen and updated baths. Just 3 minutes to NW 23rd Ave.

3 bedrooms, 2 & ½ baths, 1,706 Sq. Ft., double garage and big BBQ deck. RMLS #18075935 \$649,500.

**PACIFIC NW CONTEMPORARY  
SEASONAL VIEWS OF MT. ST. HELENS AND RIVERS**



**3426 NW Thurman Street**

Willamette Heights location, architect Frank Blachley contemporary treehouse with versatile living space and a private feel. Take in the view through the enormous windows while curled up on the built-in bench seat or while BBQing on the deck.

2 bedrooms, 2 baths, 1,918 Sq. Ft., RMLS #18162618 \$749,000.

**MID-CENTURY MAD MEN STYLE CO-OP  
VIEW WASHINGTON PARK AND THE MANSIONS  
OF KINGS HILL**



**2323 SW Park Place, #903**

The Park Vista Cooperative is located in a magical location that is the best of both worlds: Just steps to the active Alphabet District shopping & dining. Just as close is the nature and culture of Portland's Washington Park. Big deck, secure parking and huge storage areas complement this comfortable unit with a spacious master suite and guest room, too.

2 bedrooms, 2 baths, 1,340 Sq. Ft., RMLS #18671108 \$299,000.

*Specializing in Historic & Architecturally Significant Homes*

**THE DAN VOLKMER TEAM**

DAN VOLKMER PRINCIPAL BROKER

BURDEAN BARTLEM, KISHRA OTT & MARDI DAVIS BROKERS

LICENSED IN THE STATE OF OREGON

  
**Windermere**  
REAL ESTATE  
WINDERMERE REALTY TRUST

**503-497-5158**

See our website at [www.danvolkmer.com](http://www.danvolkmer.com)



*Burdean, Dan, Mardi, and Kishra*