

**MERLOT ON THE BALCONY OVERLOOKING
THE PRIVATE DECK & SHARED GARDEN
URBAN TOWNHOUSE FOR EASY CARE & CITY LIVING**

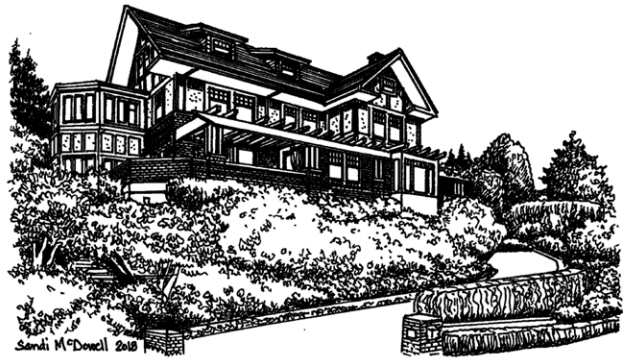


1814 NW 28th Avenue

A sophisticated living space with elegant proportions, custom window casings and artisanal upgrades. A balcony off the master suite and a deck from the living room are private and sunny. In the perfect location to get to and from anywhere in Portland, yet a leafy green neighborhood with access to parks, restaurants and recreation.

3 bedrooms, 2 and ½ baths, 2-car tandem garage, 2,041 Sq. Ft. RMLS #18401482 \$849,500.

**CHAMPAGNE TASTES AND SPECTACULAR CITY VIEWS
STATELY TUDOR MANOR IN WESTOVER TERRACES**



2866 NW Shenandoah Terrace

The city is at your feet and the forest is at your back in this impeccably updated 1919 home. Rich with history and extensively updated systems with high-quality finishes, 3 outdoor entertaining areas, new kitchen, new roof, updated baths, billiard room with a mahogany bar. A quiet dead-end street in a close in neighborhood—quiet and private yet minutes to NW Portland amenities.

5 bedrooms, 4 and ½ baths, 3-car garage, 6,719 Sq. Ft. RMLS #18280050 \$1,975,000.

**LEMONADE FRONT PORCH AND S'MORES
BY THE FIREPIT
SOLID EMIL SCHACHT CRAFTSMAN WILLAMETTE HEIGHTS**

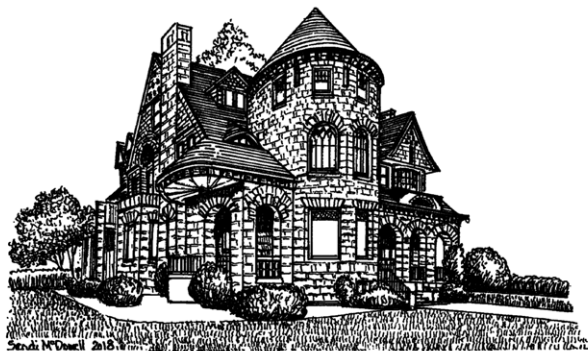


3431 NW Thurman Street

A blend of architectural pedigree and state-of-the-art renovation work makes this charming Craftsman a wonderful Willamette Heights city house. Original woodwork, box beams, original painted mural combined with new interior paint, new HVAC, and hard-scaping, including a brilliant fire pit and tons of outdoor living potential.

4 bedrooms, 2 and ½ baths, off-street parking and recreational storage area, 4,758 Sq. Ft. RMLS #18676161, \$985,000.

**SINGLE MALT SCOTCH AND FINE WOOD WORK
THE CASTLE-LIKE MACKENZIE HOUSE**



615 NW 20th Avenue

Highly ornate Richardsonian Romanesque architecture filled with original detailing, woodwork, stonework, fireplaces, metal work and fixtures. Includes adjacent Abbott Hall with 16 offices and 2 meeting rooms and 8 parking spots. National Historic Registry and The Historic Alphabet District. Potential is endless for creative usage and residential opportunity.

Mackenzie House—8 bedrooms, 5 full and ½ baths, 9,287 Sq. Ft.

Abbott Hall—16 offices, lobby, full basement, 4 half baths and storage, 8,960 Sq. Ft.

RMLS #18553235 \$3,500,000.

**A FINE AGED WHISKEY BEFORE HEADING OUT
TO THE MUSEUM
THE ELIOT CONDOMINIUMS**



1221 SW 10th Avenue, Unit 906

Luxurious SW corner unit at The Eliot in Portland's Cultural District near The Schnitzer, PSU, Portland Art Museum. 2 full/ legal bedrooms. Flooded with natural light & high-quality upgrades: granite kitchen island, custom built-ins, closet organizers, automatic blinds & electric fireplace. Balcony for the BBQ & one garage parking space. Concierge attends the lobby allowing you a carefree lifestyle. Walk Score 99 or hop on the MAX or bus.

2 bedrooms, 2 baths, 1,568 Sq. Ft. RMLS #18201238 \$775,000.

Specializing in Historic & Architecturally Significant Homes

THE DAN VOLKMER TEAM

DAN VOLKMER PRINCIPAL BROKER

BURDEAN BARTLEM, KISHRA OTT & MARDI DAVIS BROKERS

LICENSED IN THE STATE OF OREGON


Windermere
REAL ESTATE
WINDERMERE REALTY TRUST

503-497-5158

See our website at www.danvolkmer.com



Burdean, Dan, Mardi, and Kishra